

## Instructions for Javad GNSS Ohio County Coordinate Systems

The Ohio County Coordinate System (OCCS) is provided as a folder with individual files in the Javad .jcs format. These files may be used with all Javad geodetic software, and are provided in .zip format.

For use with the Triumph LS series of receivers, please follow the following instructions.

The files are all contained within OHIO CCS W GEOID18.zip. Once the zip file is downloaded, then please unzip it on your PC, and you will have a standard folder named "OHIO CCS W GEOID18".

Now copy the resulting folder to the SD card that resides in the receiver. You may use a USB jump drive, or a direct USB connection to the receiver. It is recommended that you simply place it in the root directory to facilitate finding it without extensive browsing required.

### To Select your desired County Zone:

While accessing the "PAGES" screen, press The "Edit" button to access the Coordinate System Selection Screen

Pages			
Page0	<input checked="" type="radio"/>	Edit	<input checked="" type="checkbox"/>
Page1	<input type="radio"/>	Edit	<input checked="" type="checkbox"/>
Page2	<input type="radio"/>	Edit	<input checked="" type="checkbox"/>
Page3	<input type="radio"/>	Edit	<input checked="" type="checkbox"/>
Page4	<input type="radio"/>	Edit	<input checked="" type="checkbox"/>
Page5	<input type="radio"/>	Edit	<input checked="" type="checkbox"/>
Page6	<input type="radio"/>	Edit	<input checked="" type="checkbox"/>
Page7	<input type="radio"/>	Edit	<input checked="" type="checkbox"/>
Page8	<input type="radio"/>	Edit	<input checked="" type="checkbox"/>
Page9	<input type="radio"/>	Edit	<input checked="" type="checkbox"/>

Page0: HTDP NAD83(2011) | NAVD 88

Cancel Check All Uncheck All OK

To Select your OCCS zone, press the button with The three green lines near the top right of the Display.

Project Favorites Recents Default

HTDP NAD83(2011) | NAVD 88

Geodetic System

Name HTDP NAD83(2011) | NAVD 88

Default name NAD83(2011) | NAVD 88

Epoch 2010.0000

Geodetic Datum

Semi-major axis 6378137.000m

Inverse flattening 1 / 298.257222101

Prime meridian 00°00'00"

HTDP WGS84(ITRF2008) to NAD83(2011) / NAVD 88

Area 24°00'00"N...57°59'50"N x 130°00'00"W...060°00'00"W

Esc Select

Select the "Import" option.

Project Favorites Recents Default

Additional actions

Favorite Duplicate

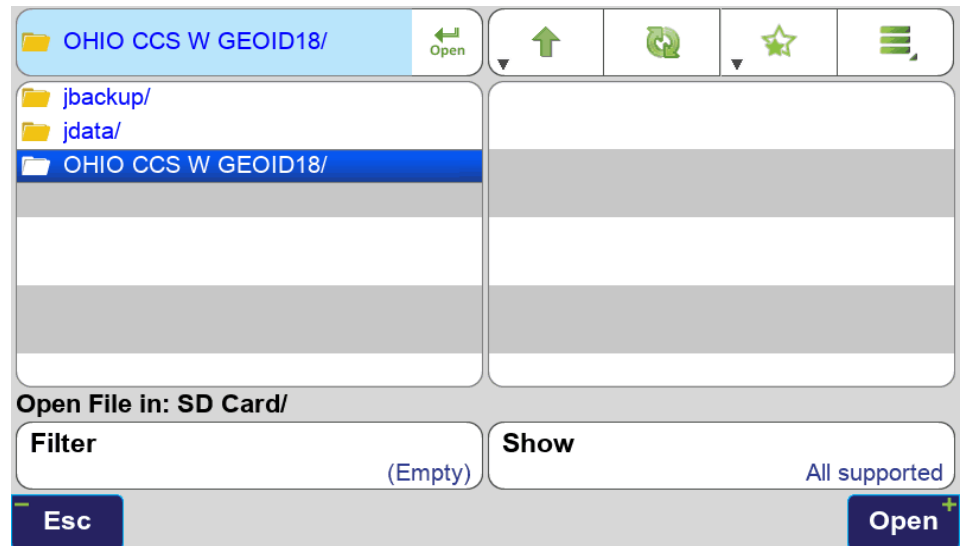
Import Export

All Projects's CS Refresh

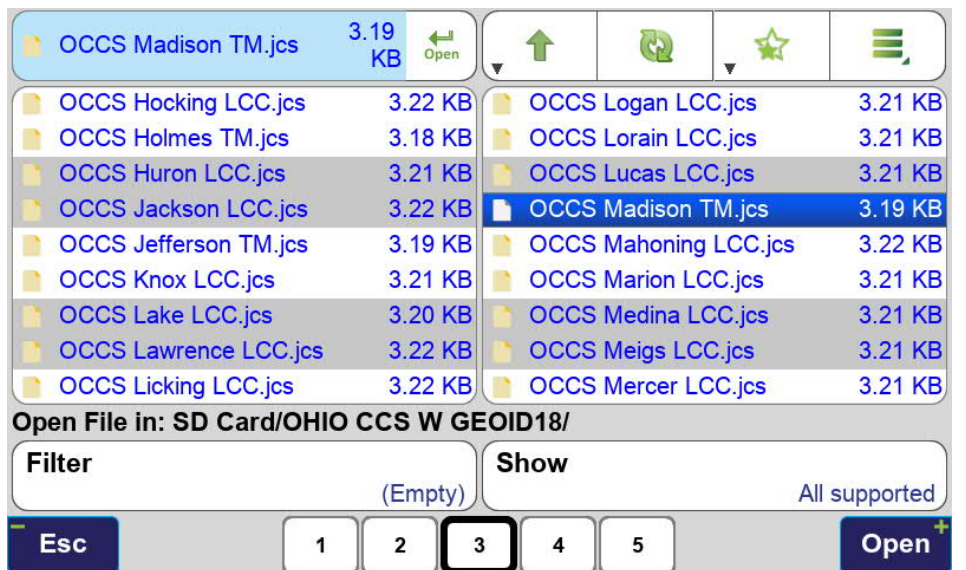
Close

Esc Select

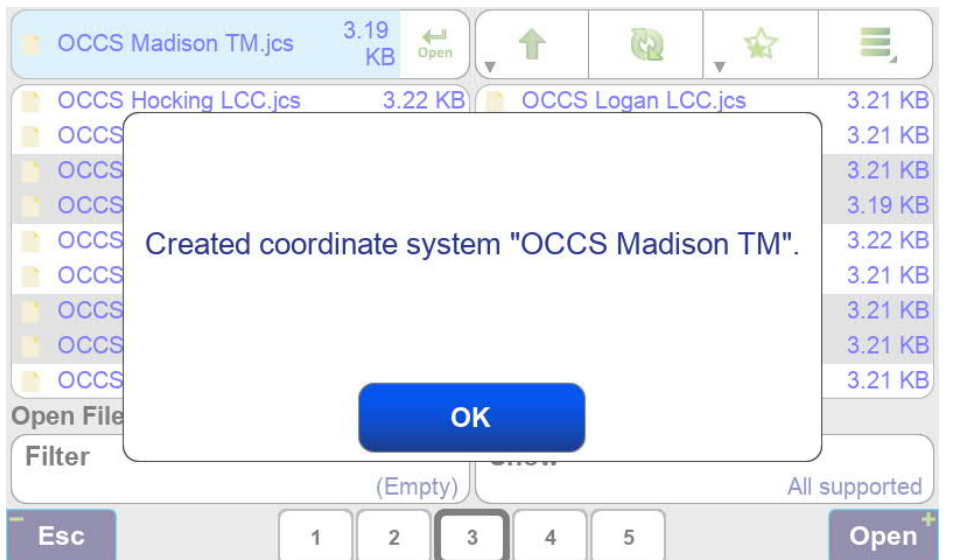
Select the folder named  
OHIO CCS W GEOID18  
Then press “Open” on the  
Bottom right.



Select the OCCS zone that  
you desire.  
Then press “Open” on the  
Bottom right.



You will then see this message.



Now the desired coordinate system exists on the receiver.

Press “Select” at the bottom right, and the selected system is applied to the page chosen at the top of this example.

If you add this zone to your favorites, You will not have to import it in the Future.

Project	Favorites	Recents	Default

HTDP NAD83(2011) | NAVD 88

OCCS Madison TM

**Grid System**

Name: OCCS Madison TM

Default name: NAD83(2011) / OCCS Madison TM | NAVD 88

Epoch: 2010.0000

**Geodetic Datum**

Semi-major axis: 6378137.000m

Inverse flattening: 1 / 298.257222101

Prime meridian: 00°00'00"

WGS84(ITRF2008) to NAD83(2011) / OCCS Madison TM | NAVD 88

Area: 40°22'42"N 13°30'36"N

Esc

Select

If you have any questions, or need one of these coordinate systems that references a different geoid, or no geoid at all, please contact John Evers with Javad GNSS Support at 614 595 9412.